

N4R-200

Dual EZchip Packet Inspection Appliance

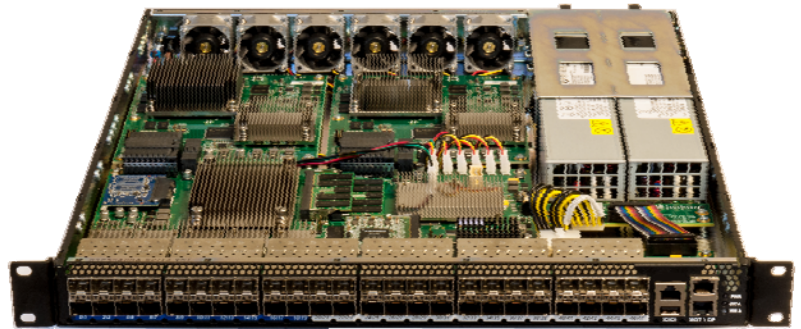
SUMMARY

The N4R-200 is part of the CogniSwitch Network Appliance product line that combines the functionality of packet inspection and switching into a single, compact, rackmount appliance.

The N4R-200 features either one or two EZchip NP-4 processors (population option on separate PCB's) with Intel X86 and Broadcom high-density switching technology.

This high-performance 1U network appliance fits into the standard 19-inch wide rack enclosure.

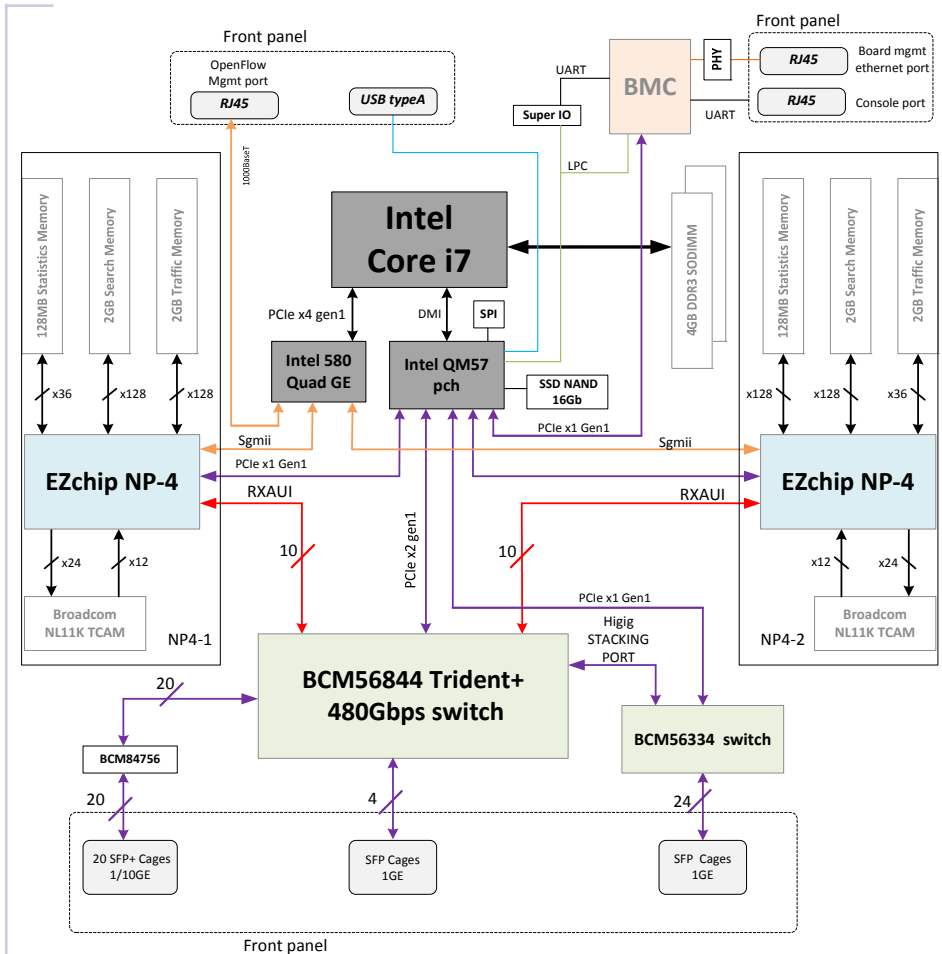
Optional: PARPRO can license a middleware library package suitable for implementing SDN applications, packet filtering, load balancing, or other network applications.



KEY FEATURES

- ◆ Dual EZchip NP-4 NPU
- ◆ Intel Core i7 620LE 2.0GHz CPU
- ◆ Broadcom BCM5684x Trident+
- ◆ BCM56334 24 Port GbE switch
- ◆ Up to 48 front-panel ports

BLOCK DIAGRAM





N4R-200

Dual EZchip Packet Inspection Appliance

SPECIFICATIONS



Central Processing Units (CPUs)	<p>EZchip NP4 network processor complex features:</p> <ul style="list-style-type: none"> • 2GByte DDR3-1333 external traffic memory • 2GByte DDR3-1333 external search memory • 128Mbyte RLDRAM 2 SIO statistics memory • Broadcom NL11K external TCAM on Interlaken-LA interface • 10 XAUI interfaces each to the switch complex [100Gbps bw] <p>Two NP-4 in high-capacity config (Hicap) ; One NP-4 in low-capacity config (Locap)</p>
Server Processor	<p>Intel Core i7-620LE processor, Dual core 2.0GHz</p> <ul style="list-style-type: none"> • Up to 8GB DDR3 ECC RAM; dual PC3-8500 SO-DIMM modules • 16GB SSD NAND flash for storage • SPI boot ROM • External facing 10/100/1000M Ethernet port for management • External USB port (type A) • Serial console (via BMC)
Chassis Management	<p>Equipped with standard board management controller (BMC)</p> <ul style="list-style-type: none"> • 10/100/1000M Ethernet port on front panel for remote access • RJ45 serial console port on front panel • Remote power and reset control, • Remote KVM capability. • Platform temperature, fan, and power supply monitoring.
Switching	<p>Broadcom BCM56844 (480Gbps) - Hicap OR Broadcom BCM56842 (320Gbps) - Locap</p> <ul style="list-style-type: none"> • One BCM56334 24 Port GbE switch • Single Unified logical switch configuration • Broadcom proprietary HiGig stack protocol • Managed from Intel Core i7 via PCIe interface
I/O Capabilities	<p>Intel Core i7 processor:</p> <ul style="list-style-type: none"> • 10/100/1000BaseT RJ45 Ethernet • EIA-232 serial console (to BMC mux) • USB Type-A host interface <p>Hicap(Locap) Front Panel:</p> <ul style="list-style-type: none"> • 20(10) SFP+ cages for 10GE, 1G, 100M, 10M and LRM connectivity • 28(22) SFP cages for 10M, 100M, 1GE connectivity • SFP cages monitored and controlled from Intel Core i7 I2C Bus
Mechanical	<ul style="list-style-type: none"> • EIA/TIA standard 19" rack mount in 1U high and ~21" deep • Rack Slides and Mid mount options supported • Dual Redundant 90~264Vac Power supplies • Front-to-back cooling
Environmental	<ul style="list-style-type: none"> • Operating temperature range: 0 to 35 °C • Humidity: 0 to 95% (non-condensing) • Typical power consumption ~ 500W (Hicap) or 325W (Locap)

© PES v2.01



PARPRO Embedded Systems
(formerly JumpGen Systems)
 2141 Palomar Airport Road, Suite 350
 Carlsbad, CA 92011

Phone: 760-931-7800
 Fax: 760-931-7810
 E-mail: sales@parpro.com
 Web: PARPRO.COM